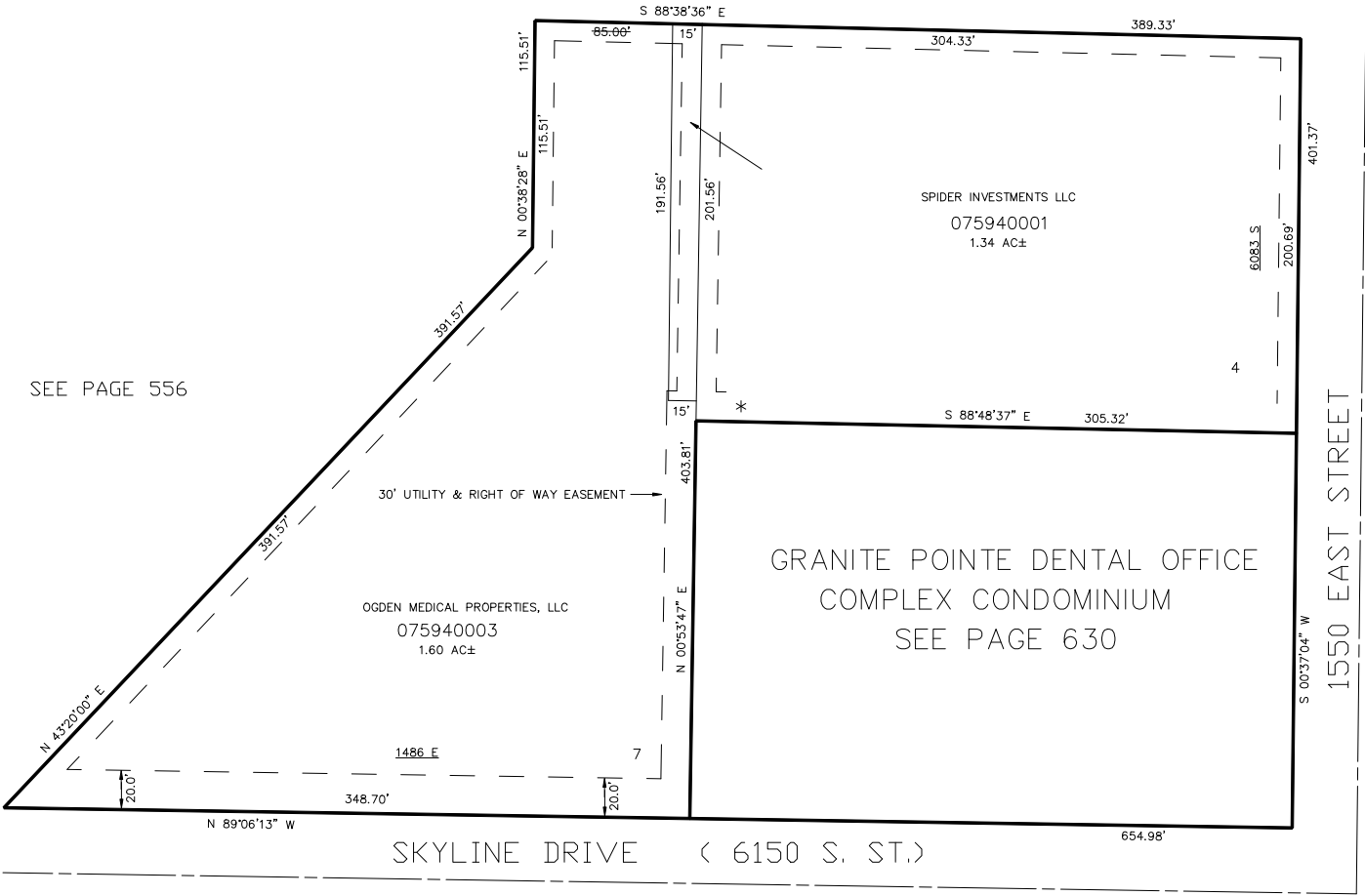


PART OF THE W.1/2, OF SECTION 22, T.5N., R.1W., S.L.B. & M.
GRANITE POINTE PHASE 1, AMENDED PLAT OF LOT 4

IN SOUTH OGDEN CITY
SCALE 1" = 50'

TAXING UNIT: 27

SEE PAGE 556



10' UTILITY & DRAINAGE EASEMENTS EACH
SIDE OF PROPERTY LINES AS INDICATED
BY DASHED LINES EXCEPT AS OTHERWISE
SHOWN.

* SEE #1929852 FOR
TERMINATION OF R.O.W.
AND UTILITY EASEMENTS
14-APR-2003

FOR COMPLETE ENG DATA SEE
ORIGINAL DEDICATION PLAT IN
BOOK 55, PAGE 65 OF RECORDS.